



## Flowfast Quartz

A decorative MMA resin floor finish made up of colour stable quartz granules encapsulated in a clear resin binder.

A hard wearing solution ideal for use in commercial and industrial settings.



### Fast Cure:

Fully trafficable just 2 hours after installation due to MMA formulation.



### Attractive:

A decorative, speckled floor finish that is available in a range of colours.



### Chemical Resistant:

Protects against a variety of chemicals found in commercial & industrial areas.



### Minimises Visible Scratches:

Coloured quartz finish disguises visible surface scratches.



### Hard-Wearing:

Hard-wearing & abrasion resistant suitable for medium to heavy traffic.



Light Grey

Mid Grey

Dark Grey

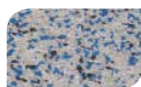
Brown



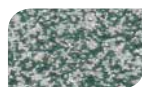
Yellow



Red



Light Blue



Green

The applied colours may differ from the examples shown. For a full colour chart and samples, contact your local Flowcrete office.



## Technical Profile\*

### SLIP RESISTANCE\*\*

Method described in BS 7976-2 (typical values for 4-S rubber slider)

Dry > 40, Wet depends on specification (in accordance with HSE and UKSRG guidelines)

### THERMAL RESISTANCE

Tolerant of sustained temperatures up to 70°C

### WATER PERMEABILITY

Nil – Karsten test (impermeable)

### ABRASION RESISTANCE

BS8204:Part 2:2002

Class AR2 - Medium duty industrial and commercial

### CHEMICAL RESISTANCE

Contact Technical Department

### COMPRESSIVE STRENGTH

EN 13892-2

60 N/mm<sup>2</sup>

### FLEXURAL STRENGTH

EN 13892-2

20 N/mm<sup>2</sup>

### TENSILE STRENGTH

BS6319

15 N/mm<sup>2</sup>

### BOND STRENGTH

Greater than cohesive strength of 25 N/mm<sup>2</sup> concrete. > 1.5 MPa

### IMPACT RESISTANCE

EN ISO 6272

10 Nm

### SPEED OF CURE

Light Traffic

1 h

Full Traffic

2 - 3h

Cure at ambient temperatures in the range 0°C to 30°C can be achieved by altering the quantity of catalyst used. For applications below 0°C, please consult our Technical Department.

\* These figures are typical properties achieved in laboratory tests at 20°C and at 50% Relative Humidity.

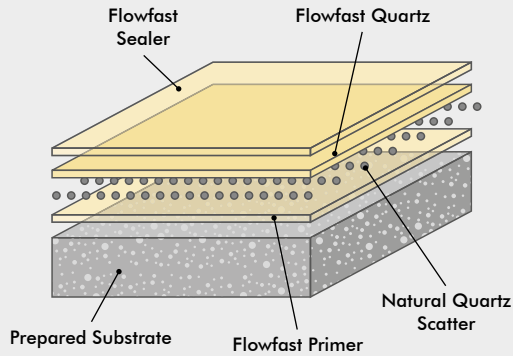
\*\*The slipperiness of flooring materials can change significantly, due to the installation process, after short periods of use, due to inappropriate maintenance, longer-term wear and/or surface contaminants (wet or dry). Textured systems are recommended to meet slip resistance value requirements for wet conditions and/or surface contaminants (wet or dry) - please contact our Technical Advisors for further details and specifications.

## Model Specification

System	Flowfast Quartz
Finish	Satin
Thickness	Dependant on specification
Manufacturer	Tremco CPG (India) Private Limited

Preparatory work and application in accordance with manufacturer's instructions.

## System Design



## Products Included In This System

Primer	Flowfast Standard Primer
Sand Scatter	Natural Quartz 0.4 - 0.8 mm
Base Coat	Flowfast Binder mixed with Coloured Quartz
Finishing Coat	Flowfast Standard Seal

Consult individual Product Data sheets for information on Flowfast Catalyst levels.

Graded aggregate can be incorporated in the sealer to provide better slip resistance.

Detailed application instructions are available upon request.

## Substrate Requirements

Concrete or screed substrate should be a minimum of 25N/mm<sup>2</sup>, free from laitance, dust and other contamination. The substrate should be dry up to 75% RH as per BS8204 and free from rising damp and ground water pressure. A special Flowfast primer can be used for substrates up to 100% RH (surface dry).

## Installation Service

The installation should be carried out by a licensed contractor with a documented quality assurance scheme. For details of our licensed contractors, contact our customer service team or enquire via our website at [www.tremcocpg-india.in](http://www.tremcocpg-india.in)

## Environmental Considerations

The finished system is assessed as non-hazardous to health and the environment. The long service life and seamless surface reduce the need for repairs, maintenance and cleaning. Environmental and health considerations are controlled during manufacture and application of the products by Tremco CPG India staff and fully trained and experienced contractors.

## Aftercare, Cleaning & Maintenance

Clean floor regularly using a rotary scrubber in conjunction with a mildly alkaline detergent (without solvent).

## Important Note

Flowcrete products are guaranteed against defective materials and manufacture and are sold subject to our standard 'Warranty, Terms and Conditions of Sale', copies of which can be obtained on request. Warranty does not cover suitability, fit for purpose or any consequential or related damages.

## Further Information

To ensure you are specifying a fit-for-purpose floor, please consult our Technical Advisors or visit our website to register your interest in specifying one of the most durable floors on the market.

1. Light colours may require additional coats to achieve desired results 2. It is recommended that top coat colours are close to base coats colours to achieve desired results  
3. This product is not UV stable and may discolour unless otherwise stated 4. System Data Sheet to be read in conjunction with Method Statement and Product data Sheets.