

## Metallic Expressions



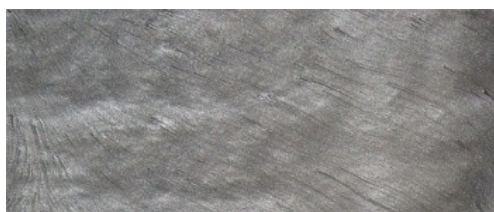
### Description

Metallic Expressions is a highly decorative, hard wearing, advanced polyurethane floor finish that provides a unique metallic finish for a wide range of modern commercial settings. The material, which provides clients with a completely seamless finish, is installed using specialist application techniques to create a molten metal effect across the surface of the floor.

### Uses

Used ideally in commercial applications, shops and showrooms, designer outlets, department stores, restaurants, reception halls and exhibition areas, casinos, trendy bars and cafes, night clubs, museum and art galleries.

### Standard Colour Chart



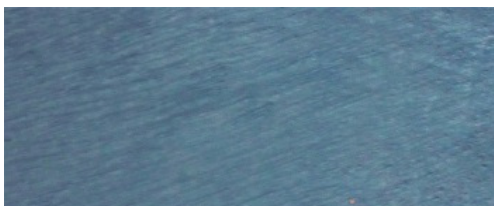
Grey Goose



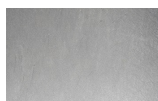
Merlot



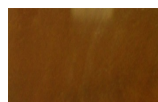
Latte



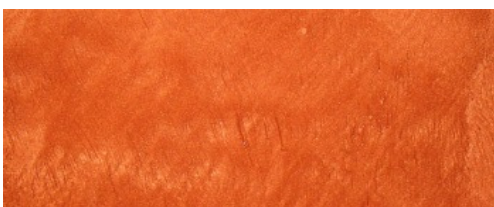
Blue Lagoon



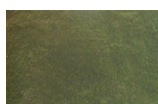
Cosmo



Coffee



Sangria



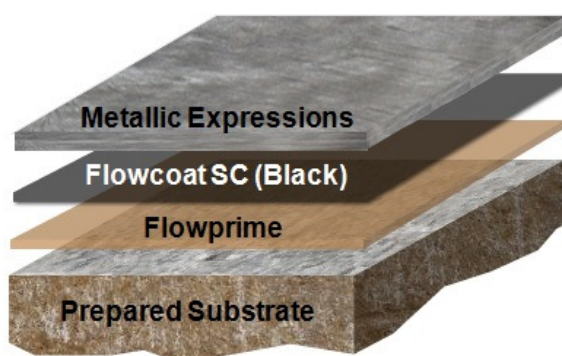
Mojito

The applied colours may differ slightly from the examples shown above. Contact our customer services for a true colour sample or a special colour match.

### Benefits

- Highly decorative metallic floor finish
- Versatile design potential
- Exceptional wear resistance
- Easy to clean and maintain
- Seamless hygienic finish
- UV light stable

### System Design



## Model Specification

Product: Metallic Expressions  
Finish: Gloss  
Colour: \_\_\_\_\_  
Thickness: Dependent on specification  
Manufacturer: Flowcrete India Pvt Ltd  
Telephone: Customer Service - +91 44 4202 9831

Preparatory work and application in accordance with manufacturer's instructions.

## Substrate Requirements

Concrete or screed substrate should be a minimum of 25N/mm<sup>2</sup>, free from laitance, dust and other contamination. The substrate should be dry to 75% RH as per BS8204 and free from rising damp and ground water pressure.

## Products Included in this System

Flowprime  
Flowcoat SC (Black)  
Metallic Expressions

For actual coverage rates, refer to the appropriate project specification.

**Detailed application instructions are available upon request.**

## Installation Service

The installation should be carried out by a Flowcrete approved applicator with a documented quality assurance scheme. Obtain details of our approved contractors by contacting our customer service team or enquiring via our web site at [www.flowcrete.in](http://www.flowcrete.in)

## Environmental Considerations

The finished system is assessed as non-hazardous to health and the environment. The long service life and seamless surface reduce the need for repairs, maintenance and cleaning. Environmental and health considerations are controlled during manufacture and application of the products by Flowcrete staff and fully trained and experienced contractors.

## Technical Information

The figures that follow are typical properties achieved in laboratory tests at 20 °C and at 50% Relative Humidity.

Fire Resistance BS476-7:1987 Class 1  
Surface spread of flame

Slip Resistance TRRL Pendulum Slip Test  
Dry >40, Wet depends on specification

Textured systems are recommended to meet slip resistance value requirements for wet conditions and/ or surface contaminants (wet or dry) - please contact our Technical Advisors for further details and specifications.

Temperature Resistance Tolerant up to 70 °C  
Surface Hardness 180secs.  
Koenig Hardness Test  
Water Permeability Nil - Karsten Test  
(impermeable)  
Chemical Resistance Contact Technical Department  
Abrasion Resistant Taber Abrader:  
5mg loss per 1000 cycles  
(1 kg load using CS17 wheels)  
Bond Strength Greater than cohesive strength  
of 25 N/mm<sup>2</sup> concrete.  
>1.5 MPa.

## Speed of Cure

	20 °C	35 °C
Light traffic	19 hrs	15 hrs
Full traffic	24 hrs	20 hrs
Full chemical cure	7 days	6 days

Low relative humidity and good ventilation are pre-requisites to achieving the above drying times.

## Aftercare - Cleaning and Maintenance

Clean regularly using a single or double headed rotary scrubber drier in conjunction with a mildly alkaline detergent.

## Important Note

Flowcrete's products are guaranteed against defective materials and manufacture and are sold subject to its standard Terms and Conditions of Sale, copies of which can be obtained on request.

## Further Information

To ensure you are specifying a fit for purpose floor for your project please consult our Technical Advisors on the number below or visit our website to register your interest in specifying one of the most durable floors on the market.