

## Flowflake Kristalina



### Description

Flowflake Kristalina is a decorative, smooth, sparkling epoxy resin floor finish ideal for a modern contemporary environment.

### Uses

Ideal for public areas, shops, department stores, restaurants, discos, casinos, trendy bars and cafes, museums and art galleries.

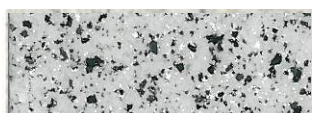
### Benefits:

- Attractive decorative finish
- Extensive design potential
- Seamless hygienic finish
- Easy to clean and maintain
- High chemical resistance
- High scratch resistance
- Wear resistant surface for wheeled traffic

### Project Reference

Selfridges London.

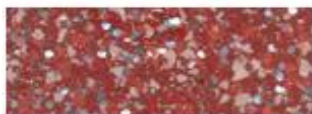
### Standard Colour Chart



Dalmatian



Azure Blue



Cranberry



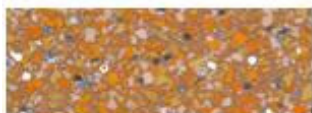
Emerald



Granite



Ebony



Clementine



Gold



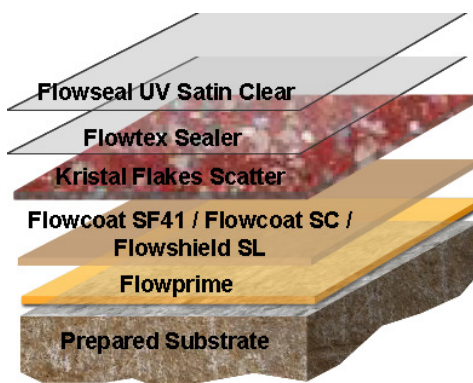
Pacific Blue



Peacock

The applied colours may differ slightly from the examples shown above. Contact our customer services for a true colour sample or a special colour match.

### System Design



## Model Specification

Product: Flowflake Kristalina  
Finish: Satin  
Thickness: Dependant on specification  
Colour:  
Manufacturer: Flowcrete India Pvt Ltd  
Telephone: Customer Service - +91 44 4202 9831  
Preparatory work and application in accordance with manufacturer's instructions.

## Substrate Requirements

Concrete or screed substrate should be a minimum of 25N/ mm<sup>2</sup>, free from laitance, dust and other contamination. The substrate should be dry upto 75% RH as per BS8204 and free from rising damp and ground water pressure.

## Products Included in this System Floors

Flowprime  
Flowcoat SF41  
Kristal Flakes  
Flowtex Sealer  
Flowseal UV Satin Clear

Detailed application instructions are available upon request.

## Installation Service

The installation should be carried out by a Flowcrete approved applicator with a documented quality assurance scheme. Obtain details of our approved contractors by contacting our customer service team or enquiring via our web site at [www.flowcrete.in](http://www.flowcrete.in).

## Environmental Considerations

The finished system is assessed as non-hazardous to health and the environment. The long service life and seamless surface reduce the need for repairs, maintenance and cleaning. Environmental and health considerations are controlled during the manufacture and application of the products by Flowcrete staff and fully trained and experienced contractors.

## Focus on the Floorzone

Flowcrete India Pvt Ltd is a division of the Flowcrete Group, world leaders in specialist industrial and commercial flooring. Systems available include: underfloor heating systems, floor screeds, surface damp proof membranes, decorative floor finishes, seamless terrazzo, car park deck waterproofing and corrosion protection systems... to name just a few. Our corporate objective is to satisfy your flooring needs.

## Technical Information

The figures that follow are typical properties achieved at 20°C and 50% Relative Humidity.

Fire Resistance	<b>Class G</b> <b>Certificate No 1721/75 SITAC</b>
Slip Resistance	TRRL Pendulum Slip Test <b>Dry 56 Wet dependant on specification</b>

Textured systems are recommended to meet slip resistance value requirements for wet conditions and/or surface contaminants (wet or dry) - please contact our Technical Advisors for further details and specifications.

Abrasion Resistance	BS8204:Part 2:2002 <b>Class AR2 -Medium duty industrial and commercial</b>
Temperature Resistance	<b>Tolerant of sustained temperatures up to 60 °C</b>
Water Permeability	Nil - Karsten Test ( <b>Impermeable</b> )
Vapour Permeability	ASTM E96:90 <b>2.5 g /m<sup>2</sup> / mm/24hrs</b>
Chemical Resistance	Contact Technical Department
Impact Resistance (ISO 6272)	<b>1 kg weight &gt;1.8 m</b> <b>2 kg weight &gt;1.5 m</b>
Flexural Strength	<b>15 N/mm<sup>2</sup> (BS6319)</b>
Tensile Strength	<b>10 N/mm<sup>2</sup> (BS6319)</b>
Bond Strength	Greater than cohesive strength of 25 N/mm <sup>2</sup> concrete. <b>&gt;1.5 MPa.</b>

## Speed of Cure

	10°C	20°C	30°C
Light traffic	36 hrs	24 hrs	16 hrs
Full traffic	72 hrs	48 hrs	36 hrs
Full chemical cure	12 days	7 days	6 days

## Aftercare - Cleaning and Maintenance

Clean regularly using a single or double headed rotary scrubber drier in conjunction with a mildly alkaline detergent.

## Important Note

Flowcrete's products are guaranteed against defective materials and manufacture and are sold subject to its standard Terms and Conditions of Sale, copies of which can be obtained on request.

## Further Information

To ensure you are specifying a fit for purpose flooring for your project please consult our Technical Advisors on the number below or visit our website to register your interest in specifying one of the most durable floors on the market.