

## Peran ESD SL (2 mm)



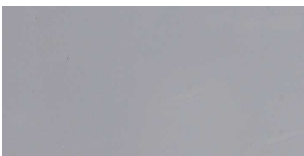
Standard colour chart



Goosewing Grey 222



Tile Red 637



Mid Grey 280



Emerald Green 740



Yellow 340

The applied colours may differ slightly from the examples shown above. Contact our customer services for a true colour sample or a special colour match.

### Description

Peran ESD SL is an anti-static, hygienic, easy-to-clean self-smoothing resin floor finish.

### Uses

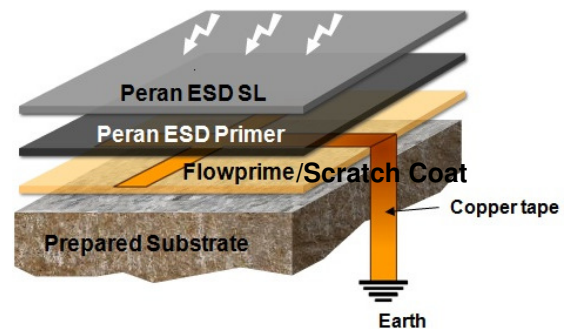
To provide a hard-wearing, seamless, anti-static floor compliant with BS 2050.

Used in dry process areas where the floor is subjected to medium to heavy duty foot, trolley, pallet truck and rubber wheeled fork lift traffic. Typical uses include laboratories, clean rooms, warehouses, and electronic, aerospace, automotive and printing plants.

### Benefits

- Attractive, enhances working environment
- Meets BS 2050 anti-static requirements
- Hygienic – easy to clean
- Non-tainting, non-dusting
- Hard-wearing floor finish
- Abrasion resistant

### System Design



## Model Specification

Product: Peran ESD SL  
Finish: Gloss  
Thickness: nominal 2 mm  
Colour: \_\_\_\_\_  
Manufacturer: Flowcrete India Pvt Ltd  
Telephone: Customer Service - +91 44 4202 9831  
Preparatory work and application in accordance with manufacturer's instructions.

## Substrate Requirements

Concrete or screed substrate should be a minimum of 25N/mm<sup>2</sup>, free from laitance, dust and other contamination. The substrate should be dry and free from rising damp and ground water pressure. If no damp proof membrane is present Hydraseal DPM can be incorporated directly beneath the Peran ESD SL system.

## Products Included in this System

Primer: 1<sup>st</sup> coat Flowprime @ 0.25 kg/m<sup>2</sup>  
2<sup>nd</sup> coat Flowprime @ 0.25 kg/m<sup>2</sup>  
Conductive Grid of 10 mm wide copper tape.  
Anti-Static Primer: Peran ESD Primer @ 0.4 kg/m<sup>2</sup>  
Topping: Peran ESD SL (density 1.8 kg/l) @ 3.6 kg/m<sup>2</sup>

Detailed application instructions are available upon request.

## Conductive Grid

A network of 10 mm wide, self-adhesive, conductive copper tape is always recommended in combination with any Flowcrete anti-static flooring system. The copper tape must be applied directly onto the cured final coat of Flowprime, 150mm in from the perimeter of the application. A further grid of tape should be applied within this area at 3 m centres. Special attention should be paid to tape areas passing over expansion or bay joints to ensure permanent electrical continuity. The applied tape matrix should be secure and fully bonded to a confirmed earth point.

## Installation Service

The installation should be carried out by a Flowcrete approved applicator with a documented quality assurance scheme. Obtain details of our approved contractors by contacting our customer service team or enquiring via our web site at [www.flowcrete.in](http://www.flowcrete.in).

## Environmental considerations

The finished system is assessed as non-hazardous to health and the environment. The long service life and seamless surface reduce the need for repairs, maintenance and cleaning. Environmental and health considerations are controlled during the manufacture and application of the products by Flowcrete staff and fully trained and experienced contractors.

## Focus on the Floorzone

Flowcrete India Pvt Ltd is a division of the Flowcrete Group, world leaders in specialist industrial and commercial flooring. Systems available include: underfloor heating systems, floor screeds, surface damp proof membranes, decorative floor finishes, seamless terrazzo, car park deck waterproofing and corrosion protection systems... to name just a few. Our corporate objective is to satisfy your flooring needs.

## Technical Information

The figures that follow are typical properties achieved in laboratory tests at 20 °C and at 50% Relative Humidity.

Flowcrete India Private Limited (Chennai)  
Ganesh Towers, Door No. B-1  
1st Floor, 1st Avenue, Ashok Nagar  
Chennai 600083, Tamilnadu, India  
Tel: +91- 44 4202 9831 | +91 44 4017 6600  
Fax: +91 44 4202 9832  
Website: [www.flowcrete.in](http://www.flowcrete.in)  
Flowcrete India is an RPM Company

Flowcrete India Pvt Ltd (Mumbai)  
Unit No. F-4 First Floor  
Haware's Fantasia Business Park Plot No.47  
Sector 30A Opp. Vashi Railway Station  
Vashi Navi Mumbai- 400703  
Tel: +91 22278 16042  
Website: [www.flowcrete.in](http://www.flowcrete.in)  
Flowcrete India is an RPM Company

Fire Resistance

BS476:Part 7 Surface spread of flame: **Class 2 (indicative)**

Slip Resistance

**Dry >40 low slip potential (typical values for 4-S rubber slider)**  
Method described in BS 7976-2  
(in accordance with HSE and UKSRG guidelines)

The slipperiness of flooring materials can change significantly, due to the installation process, after short periods of use, due to inappropriate maintenance, longer-term wear and/ or surface contaminants (wet or dry).

Textured systems are recommended to meet slip resistance value requirements for wet conditions and/ or surface contaminants (wet or dry) - please contact our Technical Advisors for further details and specifications.

Temperature Resistance	<b>Tolerant up to 60°C</b>
Water Permeability	Nil - Karsten test ( <b>impermeable</b> )
Vapour Permeability	<b>0.4 gms / m<sup>2</sup> / 24 hours</b>
Surface Hardness	<b>180 secs.</b> Koenig Hardness Test
Chemical Resistance	Contact Technical Department
Abrasion Resistance BS8204-2: Class AR2	Taber Abrader: <b>50mg loss per 1000 cycles</b> (1kg Load using H17 wheels)
Compressive Strength	<b>60 N/mm<sup>2</sup></b> (BS6319)
Flexural Strength	<b>40 N/mm<sup>2</sup></b> (BS6319)
Tensile Strength	<b>25 N/mm<sup>2</sup></b> (BS6319)
Bond Strength	Greater than cohesive strength of 25N/mm <sup>2</sup> concrete. >1.5 MPa.
Electrical Resistance	<b>5 x 10<sup>4</sup> – 1 x 10<sup>8</sup> Ω</b> (to BS 2050) <b>1.8x10<sup>5</sup> – 1.4x10<sup>6</sup> Ω</b> (to EN 1081)
Toxicity	<b>Taint free to sensitive foodstuffs.</b>

Complies with BS 8204-6/FeRFA type 5.

## Speed of Cure

	10°C	20°C	30°C
Light traffic	36 hrs	16 hrs	12 hrs
Full traffic	72 hrs	48 hrs	36 hrs
Full chemical cure	12 days	7 days	5 days

## Aftercare - Cleaning and Maintenance

Clean regularly using a single or double headed rotary scrubber drier in conjunction with a mildly alkaline detergent.

## Important Note

Flowcrete's products are guaranteed against defective materials and manufacture and are sold subject to its standard Terms and Conditions of Sale, copies of which can be obtained on request.

## Further Information

To ensure you are specifying a fit for purpose flooring for your project please consult our Technical Advisors on the number below or visit our website to register your interest in specifying one of the most durable floors on the market.

[www.flowcrete.in](http://www.flowcrete.in)