



► A complete package of speciality polymer and antimicrobial treated floor coating systems for...

MEAT & POULTRY PROCESSING

Welcome to Flowcrete India

Hygiene and Safety are the top priority for meat processing facilities in order to avert and minimise the risk of foodborne illness from contaminated meat products.

On top of this, meat processing plants are exposed to aggressive cleaning methods, high impact from hooks and equipment and contaminants including blood, grease and oil. These areas require tough floor coatings with added hygiene protection and a high grade texture to prevent slip/fall accidents when surfaces are wet.

Flowcrete India offers a complete package of speciality polymer and antimicrobial treated floor coating systems designed to cater for all areas within a meat processing facility.

Meat Processing Facility Floor Plan



Storage Areas

Flowfresh SR,
Flowfresh MF



Delivery Areas

Flowtex TQ,
Flowtex PT



Processing Areas

Flowfresh HF, Flowfresh SR,
Flowfresh RT



Washing Areas

Flowfresh HF,
Flowfresh SR



Picking & Evisceration

Flowfresh HF, Flowfresh SR,
Flowfresh RT, Flowfresh MF



Slaughter Areas

Flowfresh HF, Flowfresh SR,
Flowfresh RT



Corridors & Walkways

Peran STB,
Flowfast SL



Entrances & Offices

Mondéco Crystal, Mondéco Exotic,
Rustik, Flowfast Kristallina



Locker Rooms & Ablutions

Flowfast Quartz, Peran STB,
Flowfast SL



For the application suitability of each system, look out for the check mark symbol throughout the brochure.



Polygiene® Antimicrobial Effectiveness



SARS-CoV	✓
Salmonella Typhi	✓
MRSA	✓
Enterococcus Faecalis	✓
E-coli	✓
Staphylococcus Aureus	✓
Listeria	✓
Streptococcus Pyogenes	✓
C.difficile	✓
Pseudomonas Aeruginosa	✓
Proteus Vulgaris	✓
Campila Bacta	✓



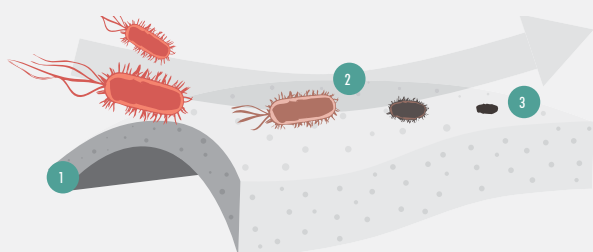
HACCP International Certified Hygienic Flooring

Hygienic, easily cleaned and slip-resistant flooring is a crucial aspect of any meat or poultry plant operating a food safety management system based on hazard prevention.

Resin flooring systems ensure a non-porous, smooth and seamless surface where there is nowhere for bacteria or mould spores to grow.

Flowcrete India's HACCP International certified and ISO 22196 compliant cementitious urethane flooring materials offer enhanced protection with the inclusion of Polygiene®, a silver-ion antimicrobial agent, designed to protect the surface from degradation caused by microbial growth.

How Does Polygiene® Work?



- 1 The silver ions are homogeneously distributed throughout the floor.
- 2 The silver ions migrate to the surface.
- 3 They protect the surface from degradation caused by microbial growth.



Flowfresh SR (3–4 mm)

A heavy duty polyurethane screed with an anti-slip finish. Suited to all zones subject to heavy foot and wheeled traffic, such as wet processing areas or preparation zones, this trowel applied 3mm to 4mm system delivers an anti slip floor finish.

- ✓ STORAGE AREAS, PROCESSING AREAS, WASHING AREAS, PICKING & Evisceration Areas, Slaughter Areas

Standard Colours



Cream



Buff



Red



Mustard



Grey



Green



TEMPERATURE RESISTANCE

From -15°C to 90°C

WATER PERMEABILITY

Karsten Test

Nil (Impermeable)

SLIP RESISTANCE

TRRL Pendulum Slip Test

Dry >80, Wet >45

Applied colours may differ from the examples shown. For a full technical profile, colour chart and samples, contact your local Flowcrete office.



Flowfresh RT (6–9 mm)

A heavy duty, chemical resistant, antimicrobial polyurethane resin floor screed providing a durable textured coloured floor finish. Flowfresh RT incorporates Polygiene® - a performance based antimicrobial additive which inhibits the growth of bacteria, fungi, moulds and mildew.

✓ PICKING & EVisCERATION AREAS,
SLAUGHTER AREAS, PROCESSING AREAS

Standard Colours



Cream



Buff



Red



Mustard



Grey



Green



TEMPERATURE RESISTANCE

From -25°C to 100°C (at 6mm)
From -45°C to 120°C (at 9mm)

SLIP RESISTANCE

TRRL Pendulum Slip Test

Dry >80, Wet >35

ABRASION RESISTANCE

Taber Abrader
(1kg load using CS17 wheels)

0.12g loss per 1000 cycles

Applied colours may differ from the examples shown. For a full technical profile, colour chart and samples, contact your local Flowcrete office.

Flowfresh MF (3–4 mm)

A self-smoothing polyurethane screeds for use in dry areas subject to light-medium traffic. Trowel applied system that delivers a seamless joint-free smooth matt finish.

✓ STORAGE AREAS, PICKING & EVISCERATION ROOMS

Standard Colours



Cream



Buff



Red



Mustard



Grey



Green



TEMPERATURE RESISTANCE

From -5°C to 70°C (at 3mm)
From -15°C to 90°C (at 4mm)

SLIP RESISTANCE

TRRL Pendulum Slip Test	Dry 70, Wet min 25 (aggregate dependent)
-------------------------	---

ABRASION RESISTANCE

Taber Abrader (1kg load using CS17 wheels)	0.1g loss per 1000 cycles
---	---------------------------





Flowfresh HF (6–9 mm)

A trowel-applied, heavy-duty and HACCP International certified antimicrobial treated cementitious urethane mortar. Flowfresh HF provides a durable, anti-slip finish, which is resistant to thermal shock, steam cleaning and moisture vapor transmission.

✓ PROCESSING AREAS, WASHING AREAS,
PICKING & Evisceration AREAS, SLAUGHTER AREAS

Standard Colours



Cream



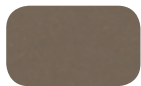
Buff



Red



Mustard



Grey



Green



TEMPERATURE RESISTANCE

From -25°C to 100°C (at 6mm)
From -45°C to 120°C (at 9mm)

SLIP RESISTANCE

TRRL Pendulum Slip Test

Dry >80, Wet >35

ABRASION RESISTANCE

Taber Abrader
(1 kg load using CS17 wheels)

0.12g loss per 1000 cycles

Applied colours may differ from the examples shown. For a full technical profile, colour chart and samples, contact your local Flowcrete office.

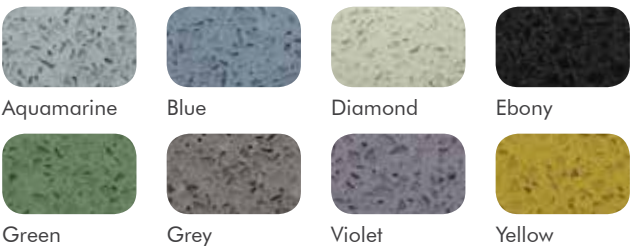


Mondéco Crystal (6 mm)

A seamless highly decorative, solvent free, epoxy resin terrazzo floor finish incorporating recycled, clear crystal glass aggregates. Mondéco Crystal is suitable for environments where design and aesthetics are key.

✓ ENTRANCES & OFFICES

Standard Colours



FIRE RESISTANCE	
BS 476-7 Surface spread of flame	Class 2
SLIP RESISTANCE	
TRRL Pendulum Slip Test	Dry >40 Low slip potential
TEMPERATURE RESISTANCE	
Tolerant of sustained temperatures up to 60°C	

Applied colours may differ from the examples shown. For a full technical profile, colour chart and samples, contact your local Flowcrete office.



Mondéco Exotic (6 mm)

A seamless highly decorative, solvent free, epoxy resin terrazzo floor finish incorporating recycled, clear crystal glass aggregates. Mondéco seamless terrazzo is suitable environments where design, aesthetics and durability are of paramount concern.

✓ ENTRANCES & OFFICES

Standard Colours



Diamond



Yellow



Aquamarine



Green



Blue



Violet



Grey



Ebony



FIRE RESISTANCE

BS 476-7

Surface spread of flame

Class 2

SLIP RESISTANCE

TRRL Pendulum Slip Test

Dry >40

Low slip potential

TEMPERATURE RESISTANCE

Tolerant of sustained temperatures up to 60°C

Applied colours may differ from the examples shown. For a full technical profile, colour chart and samples, contact your local Flowcrete office.

Flowfast Kristalina

(Thickness dependent on specification)

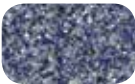
A decorative, smooth, sparkling MMA resin floor finish ideal for a modern contemporary environment.

✔ ENTRANCES & OFFICES

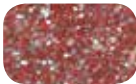
Standard Colours



Pacific Blue



Azure Blue



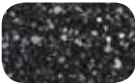
Cranberry



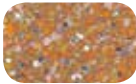
Emerald



Granite



Ebony



Clementine



Gold



Peacock



Dalmation



TEMPERATURE RESISTANCE

Tolerant of sustained temperatures up to 50°C

ABRASION RESISTANCE

BS 8204-2

Class AR2

SPEED OF CURE (PER LAYER)

Full Traffic & Chemical Cure

1 Hour

Applied colours may differ from the examples shown. For a full technical profile, colour chart and samples, contact your local Flowcrete office.





Flowfast Quartz

(Thickness dependent on specification)

A hard wearing, decorative resin floor topping made up of colour stable quartz granules encapsulated in a clear resin binder. Flowfast Quartz has been developed to enable very fast track applications, typically 90 minutes installation time to receive full traffic.

✓ LOCKER ROOMS & ABLUTIONS

Standard Colours



Dark Grey



Mid Grey



Light Grey



Light Blue



Green



Red



Yellow



Brown



TEMPERATURE RESISTANCE

Tolerant of sustained temperatures up to 70°C

ABRASION RESISTANCE

BS8204-2

Class AR1

WATER PERMEABILITY

Karsten Test

Nil (Impermeable)

Applied colours may differ from the examples shown. For a full technical profile, colour chart and samples, contact your local Flowcrete office.



Peran STB (2–3 mm)

A hard-wearing, decorative epoxy resin floor topping made up of colour stable quartz granules encapsulated in a clear resin binder. Ideal for use in wet and dry process areas where the floor is subject to heavy traffic, impact and chemical spills.

- ✓ ABLUTIONS, HAND WASH STATIONS, CORRIDORS & WALKWAYS

Standard Colours

			
Blue 7750	Cream 7700	Green 7300	Grey 7120
			
Grey 7600	Grey 7770	Red 7500	Yellow 7400



TEMPERATURE RESISTANCE	
Tolerant of sustained temperatures up to 60°C	
FIRE RESISTANCE	
BS EN 13501-1	Class C _f s1
SLIP RESISTANCE	
TRRL Pendulum Slip Test	Dry >40

Applied colours may differ from the examples shown. For a full technical profile, colour chart and samples, contact your local Flowcrete office.

Rustik & Rustik UV (6 mm)

Rustik and Rustik UV are colourful natural stones encapsulated in a clear resin binder. While Rustik is ideal for use in offices and entrances, Rustik UV’s UV stable, aliphatic resin binder makes the system suitable in a range of outdoor applications.

✓ FOYERS, ENTRANCES, OFFICE AREAS, OUTDOOR WALKWAYS

Standard Colours



Coral Tree



Deep Fir



Palm Leaf



Red Wood



Sand Dune



Wheatfield



TEMPERATURE RESISTANCE

RUSTIK

Tolerant of sustained temperatures up to 60°C

RUSTIK UV

Tolerant of sustained temperatures up to 65°C

SLIP RESISTANCE

TRRL Pendulum Slip Test

Dry >40
Wet 36

BOND STRENGTH

> 1.5MPa*

Applied colours may differ from the examples shown. For a full technical profile, colour chart and samples, contact your local Flowcrete office.



Flowtex TQ (4 mm)

A hard-wearing, decorative epoxy resin floor topping made up of colour stable quartz granules encapsulated in a clear resin binder. Flowtex TQ is ideal for use in wet and dry process areas where the floor is subject to heavy traffic, impact and chemical spills.

✓ DELIVERY AREAS

Standard Colours



Dark Grey



Mid grey



Light Grey



Light Blue



Green



Red



Yellow



Brown



TEMPERATURE RESISTANCE

Tolerant of sustained temperatures up to 60°C

COMPRESSIVE STRENGTH

BS6319

>60 N/mm²

WATER PERMEABILITY

Karsten Test

Nil (Impermeable)



Flowtex PT (4–6 mm)

A thick power trowelled heavy duty underlayment for a variety of chemical resistant and hard-wearing floor finishes.

✓ DELIVERY AREAS

Standard Colours



Light Grey



Window Grey



Emerald Green



Pastel Green



Sky Blue



Tomato Red



Signal Yellow



Tele Grey



Light Blue



Agate Grey

TEMPERATURE RESISTANCE

Tolerant of sustained temperatures up to 60°C

COMPRESSIVE STRENGTH

BS6319

>50 N/mm²

WATER PERMEABILITY

Karsten Test

Nil (Impermeable)

Applied colours may differ from the examples shown. For a full technical profile, colour chart and samples, contact your local Flowcrete office.



Flowfast SL (2–3 mm)

A satin matt, coloured, self smoothing resin floor topping. Flowfast SL has been developed to enable very fast track applications, therefore dramatically reducing down time. Flowfast SL is ideal for use in dry process areas where the floor is subject to impact and medium/heavy duty traffic.

✓ ABLUTIONS, LOCKER ROOMS, CORRIDORS & WALKWAYS

Standard Colours



Dark Grey



Forrest Green



Mid Grey



Traffic Blue



Tile Red



SLIP RESISTANCE

Typical values for
4-S rubber slider

Dry >40
Low slip potential

ABRASION RESISTANCE

BS8204-2

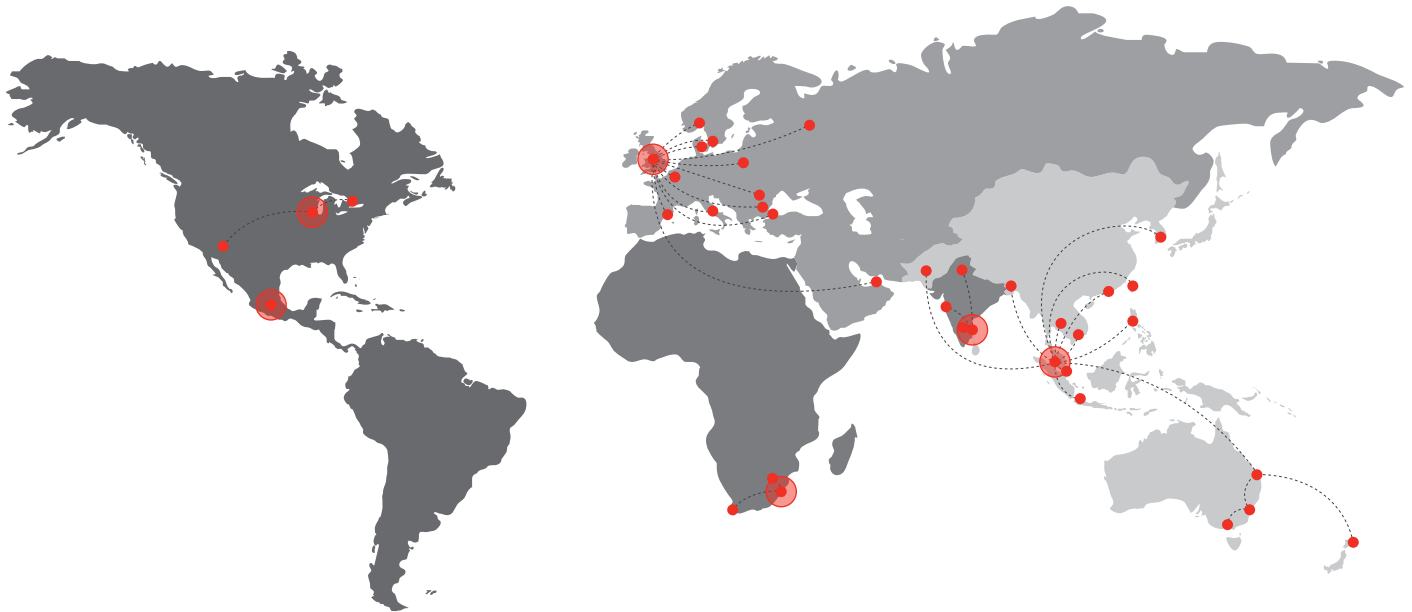
Class AR2

WATER PERMEABILITY

Karsten Test

Nil (Impermeable)

Applied colours may differ from the examples shown. For a full technical profile, colour chart and samples, contact your local Flowcrete office.



Flowcrete

World leader in seamless resin flooring solutions and other specialist coatings.

Africa

South Africa	+27 31 701 0017	southafrica@flowcrete.com
--------------	-----------------	---------------------------

Asia Pacific (APAC)

Australia	+61 7 3205 7115	australia@flowcrete.com
Bangladesh	+603 6277 9575	bangladesh@flowcrete.com
Hong Kong	+852 2795 0478	hongkong@flowcrete.com
Indonesia	+62 21 252 3201	indonesia@flowcrete.com
Korea	+60 3 6277 9575	korea@flowcrete.com
Malaysia	+60 3 6277 9575	asia@flowcrete.com
New Zealand	+64 7 541 1221	newzealand@flowcrete.com
Pakistan	+60 3 6277 9575	pakistan@flowcrete.com
Philippines	+63 2 834 6506	philippines@flowcrete.com
Singapore	+65 6848 7166	singapore@flowcrete.com
Taiwan	+60 3 6277 9575	taiwan@flowcrete.com
Thailand	+66 2539 3424	thailand@flowcrete.com
Vietnam	+84 28 6287 0846	vietnam@flowcrete.com

Europe & Middle East (EME)

Bulgaria	+359 898 61 58 31	bulgaria@flowcrete.com
Denmark	+46 435 40 01 10	denmark@flowcrete.com
France	+33 1 60 61 74 42	france@flowcrete.com
Italy	+39 339 4853258	italy@flowcrete.com
Norway	+47 6486 0830	norway@flowcrete.com
Poland	+48 22 879 8907	poland@flowcrete.com
Romania	+40 766 596 991	romania@flowcrete.com
Russia	+7 916 931 3513	russia@flowcrete.com
Spain	+34 937 07 0872	spain@flowcrete.com
Sweden	+46 435 40 01 10	sweden@flowcrete.com
Turkey	+90 212 2946570	turkey@flowcrete.com
UAE	+971 4 347 0460	uae@flowcrete.com
UK	+44 (0) 1270 753 000	uk@flowcrete.com

India

India	+91 44 40176600	india@flowcrete.com
-------	-----------------	---------------------

North America

Canada	+1 877-210-2444	canada@flowcrete.com
Mexico	+55 44 40 94 00	mexico@flowcrete.com
USA	+1 513-943-4225	americas@flowcrete.com