



► A complete package of specialty resin and antimicrobial treated floor coating systems for...

DAIRY & CHEESE PLANTS

Welcome to Flowcrete India

Like most wet processing facilities, dairy and cheese plants can prove a challenging environment for unprotected concrete. Protective floor coating systems must offer sufficient chemical resistance to corrosive dairy fats, lactic acids and proteins as well as provide an anti-slip, easily cleaned and de-greased surface.

In addition, floors found in dairy and cheese processing facilities are subject to heavy forklift and pallet truck traffic as well as thermal shock conditions resulting from pressurised steam cleaning - both of which can lead to mechanical damage.

Flowcrete India offers a complete package of specialty resin and antimicrobial treated floor coating systems designed to cater for all areas within dairy and cheese processing facilities.

Dairy & Cheese Processing Facility Floor Plan



1 Offices & Foyers
Mondéco Crystal, Mondéco Earth,
Rustik, Flowfast Terrosso

2 Pasturising Areas
Flowfresh SR,
Flowfresh RT

3 Ablutions
Flowfast Quartz,
Flowshield Quartz, Peran STB

4 Processing Areas
Flowfresh SR,
Flowfresh RT

5 Delivery Areas
Flowfresh SR,
Flowfresh MF

6 Packaging Areas
Flowfresh RT,
Flowfresh MF

✓ For the application suitability of each system, look out for the check mark symbol throughout the brochure.



Polygiene® Antimicrobial Effectiveness



SARS-CoV	✓
Salmonella Typhi	✓
MRSA	✓
Enterococcus Faecalis	✓
E-coli	✓
Staphylococcus Aureus	✓
Listeria	✓
Streptococcus Pyogenes	✓
C.difficile	✓
Pseudomonas Aeruginosa	✓
Proteus Vulgaris	✓
Campila Bacta	✓



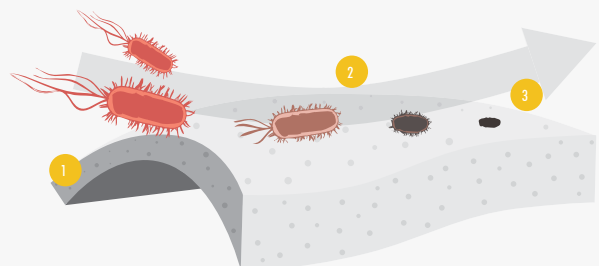
HACCP International Certified Hygienic Flooring

Dairy and cheese plant floors are subject to spillage from water, milk, brine and whey. As such, they can present a slip and hygiene risk.

Resin flooring systems ensure a non-porous, smooth and seamless surface where there is nowhere for bacteria or mold spores to grow.

Flowcrete India's HACCP International certified and ISO 22196 compliant cementitious urethane flooring materials offer enhanced protection with the inclusion of Polygiene®, a silver-ion antimicrobial agent, designed to protect the surface from degradation caused by microbial growth.

How Does Polygiene® Work?



- 1 The silver ions are homogeneously distributed throughout the floor.
- 2 The silver ions migrate to the surface.
- 3 They protect the surface from degradation caused by microbial growth.



Flowfresh RT (6–9 mm)

A heavy duty, chemical resistant, antimicrobial polyurethane resin floor screed providing a durable textured coloured floor finish. Flowfresh RT incorporates Polygiene® – a performance based antimicrobial additive which inhibits the growth of bacteria.

✓ PROCESSING, STORE ROOMS, FREEZERS & COOKING AREAS,
CHEESE STORE ROOMS, PASTURISING AREAS

Standard Colours



Cream



Buff



Red



Mustard



Grey



Green



TEMPERATURE RESISTANCE

From -25°C to 100°C (at 6mm)
From -45°C to 120°C (at 9mm)

SLIP RESISTANCE

TRRL Pendulum Slip Test

Dry >80, Wet >35

ABRASION RESISTANCE

Taber Abrader
(1kg load using CS17 wheels)

0.12g loss per 1000 cycles

Applied colours may differ from the examples shown. For a full technical profile, colour chart and samples, contact your local Flowcrete office.



Flowfresh SR (3–5 mm)

A heavy duty, chemical resistant, antimicrobial polyurethane resin floor system with a positively textured finish. Flowfresh SR incorporates Polygiene® – a performance based antimicrobial additive which inhibits the growth of bacteria, fungi, moulds and mildew.

✓ PACKAGING AREAS, PROCESSING AREAS, CHEESE STORE ROOMS, PASTURISING AREAS

Standard Colours



Cream



Buff



Red



Mustard



Grey



Green



TEMPERATURE RESISTANCE

From -15°C to 90°C

SLIP RESISTANCE

TRRL Pendulum Slip Test

Dry 80, Wet min 45
(aggregate dependent)

ABRASION RESISTANCE

Taber Abrader
(1kg load using CS17 wheels)

0.1g loss per 1000 cycles

Applied colours may differ from the examples shown. For a full technical profile, colour chart and samples, contact your local Flowcrete office.



Flowfresh MF (3–4 mm)

A self-smoothing polyurethane screeds for use in dry areas subject to light-medium traffic. Trowel applied system that delivers a seamless joint-free smooth matt finish.

✓ PACKAGING AREAS, DISTRIBUTION AREAS, TESTING AREAS

TEMPERATURE RESISTANCE

From -5°C to 70°C (at 3mm)
From -15°C to 90°C (at 4mm)

SLIP RESISTANCE

TRRL Pendulum Slip Test	Dry 70, Wet min 25 (aggregate dependent)
-------------------------	---

ABRASION RESISTANCE

Taber Abrader (1kg load using CS17 wheels)	0.1g loss per 1000 cycles
---	---------------------------

Standard Colours



Cream



Buff



Red



Mustard



Grey



Green

Flowshield Quartz (2–3 mm)

A Decorative, hard-wearing, self-smoothing liquid-vinyl epoxy resin flooring system. Typical uses include dry, light industrial, commercial and institutional floors requiring a decorative but durable industrial floor performance.

✓ PACKAGING AREAS, DISTRIBUTION AREAS, ABLUTIONS

Standard Colours



Cream



Grey



Light Blue



Off White



Pastel Green



FIRE RESISTANCE

BS476:Part 7 Surface spread of flame:	Class 2 (indicative)
---------------------------------------	----------------------

TEMPRETURE RESISTANCE

Tolerant up to 60 °C

WATER PERMEABILITY

Karsten test	Nil (impermeable)
--------------	-------------------

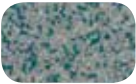
Applied colours may differ from the examples shown. For a full technical profile, colour chart and samples, contact your local Flowcrete office.

Peran STB (2-3 mm)

A hard-wearing, decorative epoxy resin floor topping made up of colour stable quartz granules encapsulated in a clear resin binder. Ideal for use in wet and dry process areas where the floor is subject to heavy traffic, impact and chemical spills.

✓ ABLUTIONS, HAND WASH STATIONS

Standard Colours



Blue 7750



Cream 7700



Green 7300



Grey 7120



Grey 7600



Grey 7770



Red 7500



Yellow 7400



TEMPERATURE RESISTANCE

Tolerant of sustained temperatures up to 60°C

FIRE RESISTANCE

BS EN 13501-1

Class C_{fl} s1

SLIP RESISTANCE

TRRL Pendulum Slip Test

Dry >40

Applied colours may differ from the examples shown. For a full technical profile, colour chart and samples, contact your local Flowcrete office.

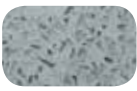


Mondéco Crystal (6 mm)


A seamless highly decorative, solvent free, epoxy resin terrazzo floor finish incorporating recycled, clear crystal glass aggregates. Mondéco Crystal is suitable for environments where design and aesthetics are key.

✓ FOYERS, ENTRANCES, OFFICE AREAS


Standard Colours




Aquamarine




Blue




Diamond




Ebony




Green



Grey



Violet



Yellow



FIRE RESISTANCE

BS 476-7 Surface spread of flame	Class 2
-------------------------------------	---------

SLIP RESISTANCE

TRRL Pendulum Slip Test	Dry >40 Low slip potential
-------------------------	-------------------------------

TEMPERATURE RESISTANCE

Tolerant of sustained temperatures up to 60°C

Applied colours may differ from the examples shown. For a full technical profile, colour chart and samples, contact your local Flowcrete office.





Mondéco Earth (6 mm)

A seamless highly decorative, solvent free, epoxy resin terrazzo floor finish incorporating granite and flint aggregates. Mondéco seamless terrazzo is suitable environments where design, aesthetics and durability are of paramount concern.

✓ FOYERS, ENTRANCES, OFFICE AREAS

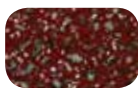
Standard Colours



Almond



Blueberry



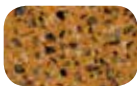
Chilli Pepper



Coconut



Kiwi



Peach



Pomegranate



Tangerine



FIRE RESISTANCE

BS 476-7

Surface spread of flame

Class 2

SLIP RESISTANCE

TRRL Pendulum Slip Test

Dry >40

Low slip potential

TEMPERATURE RESISTANCE

Tolerant of sustained temperatures up to 60°C

Applied colours may differ from the examples shown. For a full technical profile, colour chart and samples, contact your local Flowcrete office.

Flowfast Terrosso (3 mm)

A seamless, decorative, hard wearing, methyl methacrylate (MMA) resin floor finish, developed for high traffic retail or industrial environments. Flowfast Terrosso has been developed to enable very fast track applications, therefore dramatically reducing down time.

✓ FOYERS, ENTRANCES, OFFICE AREAS, ABLUTIONS



Standard Colours



Dali



Van Gogh



Picasso



Klimt



Renoir



Matisse



Da Vinci



Rembrandt

TEMPERATURE RESISTANCE

Tolerant of sustained temperatures up to 50°C

ABRASION RESISTANCE

BS8204-2

Class AR2

WATER PERMEABILITY

Karsten Test

Nil (Impermeable)



Flowfast Quartz

A hard wearing, decorative resin floor topping made up of colour stable quartz granules encapsulated in a clear resin binder. Flowfast Quartz has been developed to enable very fast track applications, typically 90 minutes installation time to receive full traffic.

✓ ABLUTIONS, OFFICE AREAS

TEMPERATURE RESISTANCE

Tolerant of sustained temperatures up to 70°C

ABRASION RESISTANCE

BS8204-2

Class AR1

WATER PERMEABILITY

Karsten Test

Nil (Impermeable)

Standard Colours



Dark Grey



Mid Grey



Light Grey



Light Blue



Green



Red



Yellow



Brown

Applied colours may differ from the examples shown. For a full technical profile, colour chart and samples, contact your local Flowcrete office.

Ask us about our range of wall coatings that contribute to a hygienic barrier throughout your facility.



Rustik & Rustik UV (6 mm)

Rustik and Rustik UV are colourful natural stones encapsulated in a clear resin binder. While Rustik is ideal for use in offices and entrances, Rustik UV's UV stable, aliphatic resin binder makes the system suitable in a range of outdoor applications.

✓ FOYERS, ENTRANCES, OFFICE AREAS, OUTDOOR WALKWAYS

Standard Colours



Coral Tree



Deep Fir



Palm Leaf



Red Wood



Sand Dune



Wheatfield



TEMPERATURE RESISTANCE

RUSTIK

Tolerant of sustained temperatures up to 60°C

RUSTIK UV

Tolerant of sustained temperatures up to 65°C

SLIP RESISTANCE

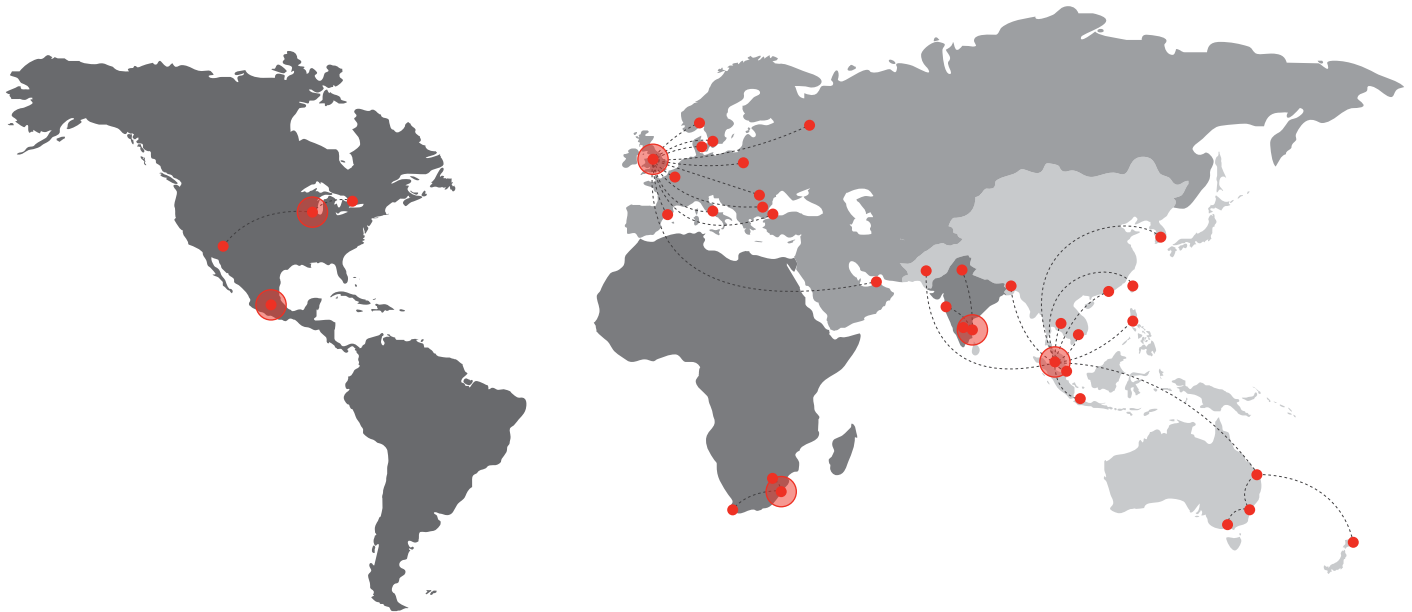
TRRL Pendulum Slip Test

Dry >40
Wet 36

BOND STRENGTH

> 1.5MPa*

Applied colours may differ from the examples shown. For a full technical profile, colour chart and samples, contact your local Flowcrete office.



Flowcrete

World leader in seamless resin flooring solutions and other specialist coatings.

Africa

South Africa	+27 31 701 0017	southafrica@flowcrete.com
--------------	-----------------	---------------------------

Asia Pacific (APAC)

Australia	+61 7 3205 7115	australia@flowcrete.com
Bangladesh	+603 6277 9575	bangladesh@flowcrete.com
Hong Kong	+852 2795 0478	hongkong@flowcrete.com
Indonesia	+62 21 252 3201	indonesia@flowcrete.com
Korea	+60 3 6277 9575	korea@flowcrete.com
Malaysia	+60 3 6277 9575	asia@flowcrete.com
New Zealand	+64 7 541 1221	newzealand@flowcrete.com
Pakistan	+60 3 6277 9575	pakistan@flowcrete.com
Philippines	+63 2 834 6506	philippines@flowcrete.com
Singapore	+65 6848 7166	singapore@flowcrete.com
Taiwan	+60 3 6277 9575	taiwan@flowcrete.com
Thailand	+66 2539 3424	thailand@flowcrete.com
Vietnam	+84 28 6287 0846	vietnam@flowcrete.com

Europe & Middle East (EME)

Bulgaria	+359 898 61 58 31	bulgaria@flowcrete.com
Denmark	+46 435 40 01 10	denmark@flowcrete.com
France	+33 1 60 61 74 42	france@flowcrete.com
Italy	+39 339 4853258	italy@flowcrete.com
Norway	+47 6486 0830	norway@flowcrete.com
Poland	+48 22 879 8907	poland@flowcrete.com
Romania	+40 766 596 991	romania@flowcrete.com
Russia	+7 916 931 3513	russia@flowcrete.com
Spain	+34 937 07 0872	spain@flowcrete.com
Sweden	+46 435 40 01 10	sweden@flowcrete.com
Turkey	+90 212 2946570	turkey@flowcrete.com
UAE	+971 4 347 0460	uae@flowcrete.com
UK	+44 (0) 1270 753 000	uk@flowcrete.com

India

India	+91 44 40176600	india@flowcrete.com
-------	-----------------	---------------------

North America

Canada	+1 877-210-2444	canada@flowcrete.com
Mexico	+55 44 40 94 00	mexico@flowcrete.com
USA	+1 513-943-4225	americas@flowcrete.com