



► A complete package of specialist resin and HACCP International certified antimicrobial treated floor coating systems for...

BREWERIES

Welcome to Flowcrete India

Chances are the next time you visit your local watering hole you'll encounter speciality polymer flooring systems throughout the facility rather than the typical tile or ceramic finishes traditionally found in these environments.

You'll find these systems not only behind the scenes, where the ale is brewing and being bottled, but also in tasting rooms where it is being enjoyed. Resin flooring systems are being used more often in these environments owing to their excellent performance attributes combined with design versatility.

Flowcrete India offers a complete package of specialist resin and HACCP International certified antimicrobial treated floor coating systems designed to cater for all areas within the brewhouse.

Brewery Floor Plan



Storage Areas

Flowcoat OP, Flowfast SL,
Flowcoat SF41



Delivery Areas

Deckshield ED, Deckshield ED
Rapide, Flowcoat SF41



Fermentation Rooms

Flowfresh SL, Flowfresh SR,
Flowcoat SF41



Tasting rooms & Foyers

Metallic Expressions, Mondéco,
Flowfast Terrosso



Amenities

Flowfast Kristalina, Flowfast Terrosso,
Flowfast Quartz Scatter



Refrigerated Storage Areas

Flowfresh SR, Flowfast SL,
Flowcoat SF41



For the application suitability of each system, look out for the check mark symbol throughout the brochure.



Polygiene® Antimicrobial Effectiveness



SARS-CoV	✓
Salmonella Typhi	✓
MRSA	✓
Enterococcus Faecalis	✓
E-coli	✓
Staphylococcus Aureus	✓
Listeria	✓
Streptococcus Pyogenes	✓
C.difficile	✓
Pseudomonas Aeruginosa	✓
Proteus Vulgaris	✓
Campila Bacta	✓



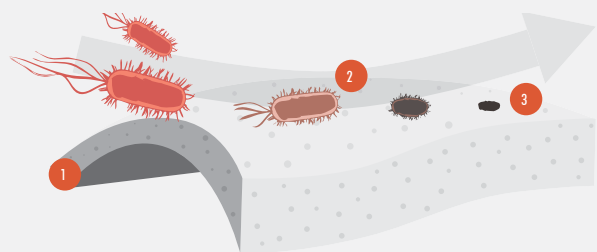
HACCP International Certified Hygienic Flooring

Brewery floors are subject to spills and staining as well as heavy loads and foot traffic. Caustic chemicals, thermal shock, slip resistance and hygiene are also a concern.

Resin flooring systems ensure a non-porous, smooth and seamless surface where there is nowhere for bacteria or mold spores to grow.

Flowcrete India's HACCP International certified and ISO 22196 compliant cementitious polyurethane flooring materials offer enhanced protection with the inclusion of Polygiene®, a silver-ion antimicrobial agent, designed to protect the surface from degradation caused by microbial growth.

How Does Polygiene® Work?



- 1 The silver ions are homogeneously distributed throughout the floor.
- 2 The silver ions migrate to the surface.
- 3 They protect the surface from degradation caused by microbial growth.



Flowfresh SL (2 mm)

A highly chemical resistant, antimicrobial polyurethane resin floor coating with an anti-slip, coloured textured finish. Suited to industrial environments subject to pedestrian and trolley traffic, such as wet processing areas or preparation zones.

✓ FERMENTATION ROOMS

Standard Colours



Cream



Buff



Red



Mustard



Grey



Green



TEMPERATURE RESISTANCE

2mm: From 5°C to 65°C

WATER PERMEABILITY

Karsten Test

Nil (Impermeable)

SLIP RESISTANCE

TRRL Pendulum Slip Test

Dry >70, Wet >25

Applied colours may differ from the examples shown. For a full technical profile, colour chart and samples, contact your local Flowcrete office.



Flowfresh SR (3-5 mm)

A heavy duty polyurethane screed with an anti-slip finish. Suited to all zones subject to heavy foot and wheeled traffic, such as wet processing areas or preparation zones, this trowel applied 3mm to 4mm system delivers an anti slip floor finish.

✓ FERMENTATION ROOMS, REFRIGERATED STORAGE AREAS

Standard Colours



Cream



Buff



Red



Mustard



Grey



Green



TEMPERATURE RESISTANCE

From -15°C to 90°C

WATER PERMEABILITY

Karsten Test

Nil (Impermeable)

SLIP RESISTANCE

TRRL Pendulum Slip Test

Dry >80, Wet >45

Applied colours may differ from the examples shown. For a full technical profile, colour chart and samples, contact your local Flowcrete office.

Flowfast SL (2.5 mm)

A satin matt, coloured, self smoothing resin floor topping. Flowfast SL has been developed to enable very fast track applications, therefore dramatically reducing down time.

✓ STORAGE AREAS, REFRIGERATED STORAGE AREAS

Standard Colours



Dark Grey



Forest Green



Mid Grey



Traffic Blue



Tile Red



TEMPERATURE RESISTANCE

Tolerant of sustained temperatures up to 50°C

ABRASION RESISTANCE

BS8204-2

Class AR2

SPEED OF CURE (PER LAYER)

Full Traffic & Chemical Cure

1 Hour



Flowfast Terroso (3 mm)

A seamless, decorative, durable MMA floor finish that delivers a fast track transformation for commercial and industrial environments. Comprising a blend of flakes in a choice of swatches, Flowfast Terroso offers extensive design potential with an attractive finish.

✓ TASTING ROOMS, BARS, FOYERS, AMENITIES

Standard Colours



Dali



Van Gogh



Picasso



Klimt



Renoir



Matisse



Da Vinci



Rembrandt

TEMPERATURE RESISTANCE

Tolerant of sustained temperatures up to 50°C

ABRASION RESISTANCE

BS8204-2

Class AR2

SPEED OF CURE (PER LAYER)

Full Traffic & Chemical Cure

1 Hour

Applied colours may differ from the examples shown. For a full technical profile, colour chart and samples, contact your local Flowcrete office.

Flowfast Kristalina

(Thickness dependent on specification)

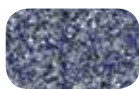
A decorative, smooth, sparkling MMA resin floor finish ideal for a modern contemporary environment.

✓ TASTING ROOMS, BARS, FOYERS, AMENITIES

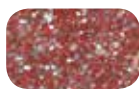
Standard Colours



Pacific Blue



Azure Blue



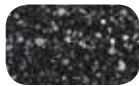
Cranberry



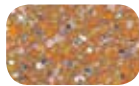
Emerald



Granite



Ebony



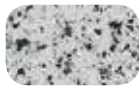
Clementine



Gold



Peacock



Dalmation



TEMPERATURE RESISTANCE

Tolerant of sustained temperatures up to 50°C

ABRASION RESISTANCE

BS 8204-2

Class AR2

SPEED OF CURE (PER LAYER)

Full Traffic & Chemical Cure

1 Hour



Flowfast Quartz Scatter

(3 mm)

A hard-wearing, decorative, fast curing MMA resin floor topping made up of colour stable quartz granules in a clear resin binder. Ideal for use in both commercial and industrial environments, Flowfast Quartz Scatter will stand up to any area of heavy traffic.

✓ TASTING ROOMS, BARS, FOYERS, AMENITIES

TEMPERATURE RESISTANCE

Tolerant of sustained temperatures up to 70°C

ABRASION RESISTANCE

BS8204-2

Class AR1

SPEED OF CURE (PER LAYER)

Full Traffic & Chemical Cure

1 Hour

Standard Colours



Cream 7700



Green 7300



Yellow 7400



Grey 7120



Grey 7600



Red 7500



Blue 7750



Grey 7770

Applied colours may differ from the examples shown. For a full technical profile, colour chart and samples, contact your local Flowcrete office.



Deckshield ED

A polyurethane car park deck coating system providing a colourful crack bridging, waterproof surface for exposed decks. Deckshield ED cosmetically enhances and reduces noise, making exposed car park decks brighter, safer environments to visit.

✓ DELIVERY AREAS, CAR PARKS

Standard Colours



Black



Dark Grey



Mid Grey



Grey



Forest Green



Light Blue



Ocean Blue



Tile Red



TEMPERATURE RESISTANT

Softens over 70°C, hardens on cooling

WATER PERMEABILITY

Karsten Test

Nil (Impermeable)

RESISTANCE TO CHLORIDE IONS

DOT BD47/94:
Appendix B, Method B4,2(d)

No chloride ion
penetration after 28 days

FIRE RESISTANCE

BS476-3

Designated EXT.FAA

Applied colours may differ from the examples shown. For a full technical profile, colour chart and samples, contact your local Flowcrete office.

Deckshield ED Rapide

A fast-track MMA car park deck coating system providing a colourful watertight, hard wearing surface for exposed decks. Deckshield ED Rapide has been developed to enable very fast track applications, therefore dramatically reducing down time.

✓ DELIVERY AREAS, CAR PARKS

Standard Colours



Black



Dark Grey



Mid Grey



Grey



Forest Green



Tile Red



ABRASION RESISTANCE (TOPCOAT)

Taber Abrader	300mg loss per 1000 cycles (1kg Load using CS17 wheels)
---------------	--

WATER PERMEABILITY

Karsten Test	Nil (Impermeable)
--------------	-------------------

SPEED OF CURE (PER LAYER)

Full Traffic	1 Hour
Full Traffic & Chemical Cure	1 Hour

FIRE RESISTANCE

BS476-3	Designated EXT.FAA
---------	--------------------

Applied colours may differ from the examples shown. For a full technical profile, colour chart and samples, contact your local Flowcrete office.



Flowcoat SF41 (3 mm)

A high performance, solvent free, chemical resistant, high-build epoxy resin coating system. Different grades of slip resistance may be achieved by inclusion of graded aggregate between coats.

✓ STORAGE AREAS, REFRIGERATED STORAGE AREAS, DELIVERY AREAS, FERMENTATION ROOMS

Standard Colours



FIRE RESISTANCE

BS 476-7	Class 1
Surface spread of flame	

SLIP RESISTANCE

TRRL Pendulum Slip Test	Dry >40
	Wet depends on specification

TEMPERATURE RESISTANCE

Tolerant of sustained temperatures up to 60°C

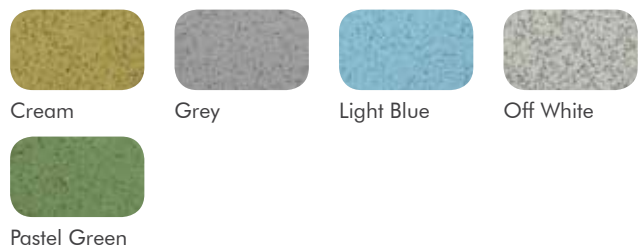


Flowshield Quartz (2–3 mm)

A durable, self-smoothing liquid-vinyl epoxy resin with a decorative speckled finish for a contemporary aesthetic. Flowshield Quartz Ideal for areas where floors require a decorative but durable surface underfoot.

✓ TASTING ROOMS, BARS, FOYERS, AMENITIES

Standard Colours



ABRASION RESISTANCE

Taber Abrader	90mg loss per 1000 cycles (1kg load using CS17 wheels)
---------------	---

SURFACE HARDNESS

Koenig Hardness Test	180 secs.
----------------------	-----------

COMPRESSIVE STRENGTH

BS 6319	>60 N/mm ²
---------	-----------------------

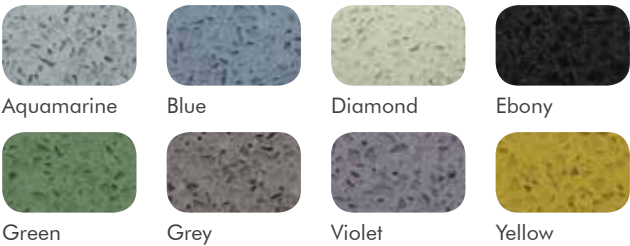
Applied colours may differ from the examples shown. For a full technical profile, colour chart and samples, contact your local Flowcrete office.

Mondéco Crystal (6 mm)

A seamless highly decorative, solvent free, epoxy resin terrazzo floor finish incorporating recycled, clear crystal glass aggregates. Mondéco Crystal is suitable for environments where design and aesthetics are key.

✓ TASTING ROOMS, BARS, FOYERS, AMENITIES

Standard Colours



FIRE RESISTANCE	
BS 476-7 Surface spread of flame	Class 2
SLIP RESISTANCE	
TRRL Pendulum Slip Test	Dry >40 Low slip potential
TEMPERATURE RESISTANCE	
Tolerant of sustained temperatures up to 60°C	



Metallic Expressions (Thickness dependent on specification)

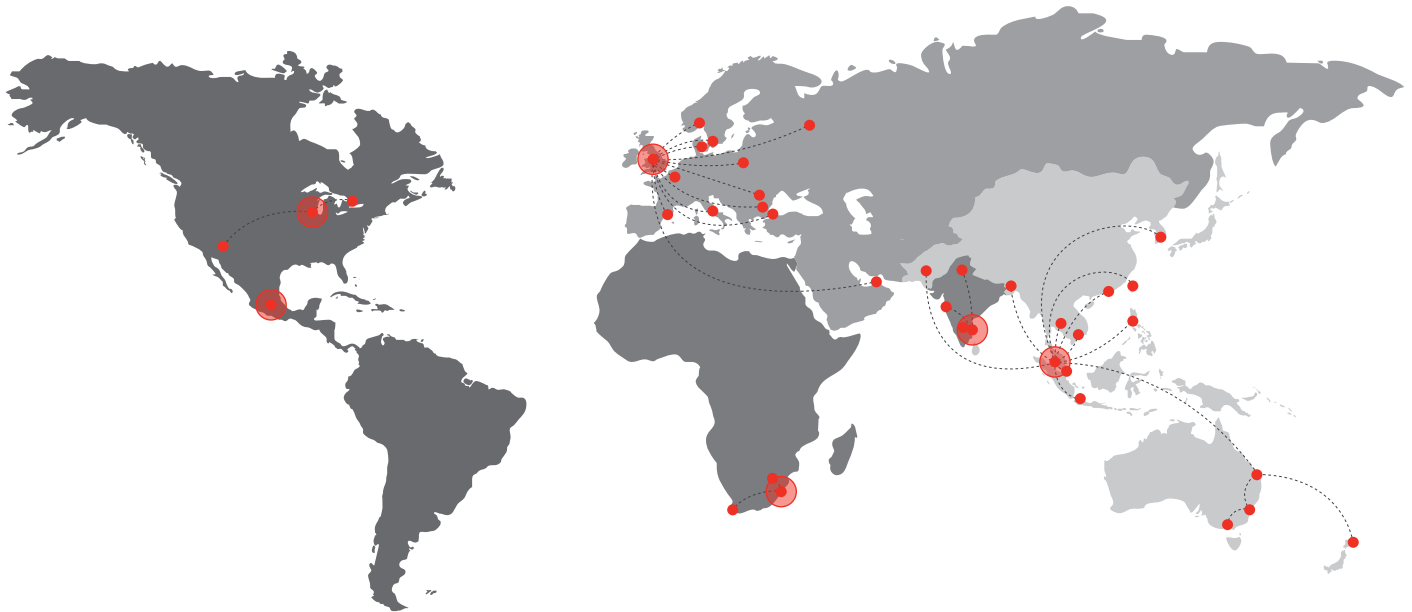
A seamless, decorative, artistic, metallic polyurethane floor coating. Metallic Expressions offers impressive wear resistance, for application in busy commercial environments, and is easy to clean and maintain.

✓ TASTING ROOMS, BARS, FOYERS, AMENITIES

Standard Colours



TEMPERATURE RESISTANCE	
Tolerant of sustained temperatures up to 60°C	
FIRE RESISTANCE	
BS 476-7 Surface Spread of Flame	Class 1
SLIP RESISTANCE	
TRRL Pendulum Slip Test	Dry >40



Flowcrete

World leader in seamless resin flooring solutions and other specialist coatings.

Africa

South Africa	+27 31 701 0017	southafrica@flowcrete.com
--------------	-----------------	---------------------------

Asia Pacific (APAC)

Australia	+61 7 3205 7115	australia@flowcrete.com
Bangladesh	+603 6277 9575	bangladesh@flowcrete.com
Hong Kong	+852 2795 0478	hongkong@flowcrete.com
Indonesia	+62 21 252 3201	indonesia@flowcrete.com
Korea	+60 3 6277 9575	korea@flowcrete.com
Malaysia	+60 3 6277 9575	asia@flowcrete.com
New Zealand	+64 7 541 1221	newzealand@flowcrete.com
Pakistan	+60 3 6277 9575	pakistan@flowcrete.com
Philippines	+63 2 834 6506	philippines@flowcrete.com
Singapore	+65 6848 7166	singapore@flowcrete.com
Taiwan	+60 3 6277 9575	taiwan@flowcrete.com
Thailand	+66 2539 3424	thailand@flowcrete.com
Vietnam	+84 28 6287 0846	vietnam@flowcrete.com

Europe & Middle East (EME)

Bulgaria	+359 898 61 58 31	bulgaria@flowcrete.com
Denmark	+46 435 40 01 10	denmark@flowcrete.com
France	+33 1 60 61 74 42	france@flowcrete.com
Italy	+39 339 4853258	italy@flowcrete.com
Norway	+47 6486 0830	norway@flowcrete.com
Poland	+48 22 879 8907	poland@flowcrete.com
Romania	+40 766 596 991	romania@flowcrete.com
Russia	+7 916 931 3513	russia@flowcrete.com
Spain	+34 937 07 0872	spain@flowcrete.com
Sweden	+46 435 40 01 10	sweden@flowcrete.com
Turkey	+90 212 2946570	turkey@flowcrete.com
UAE	+971 4 347 0460	uae@flowcrete.com
UK	+44 (0) 1270 753 000	uk@flowcrete.com

India

India	+91 44 40176600	india@flowcrete.com
-------	-----------------	---------------------

North America

Canada	+1 877-210-2444	canada@flowcrete.com
Mexico	+55 44 40 94 00	mexico@flowcrete.com
USA	+1 513-943-4225	americas@flowcrete.com